

# Digital Vs Analog control

---

M Hewitson  
GEO ISC Meeting  
Hannover, Feb 2010

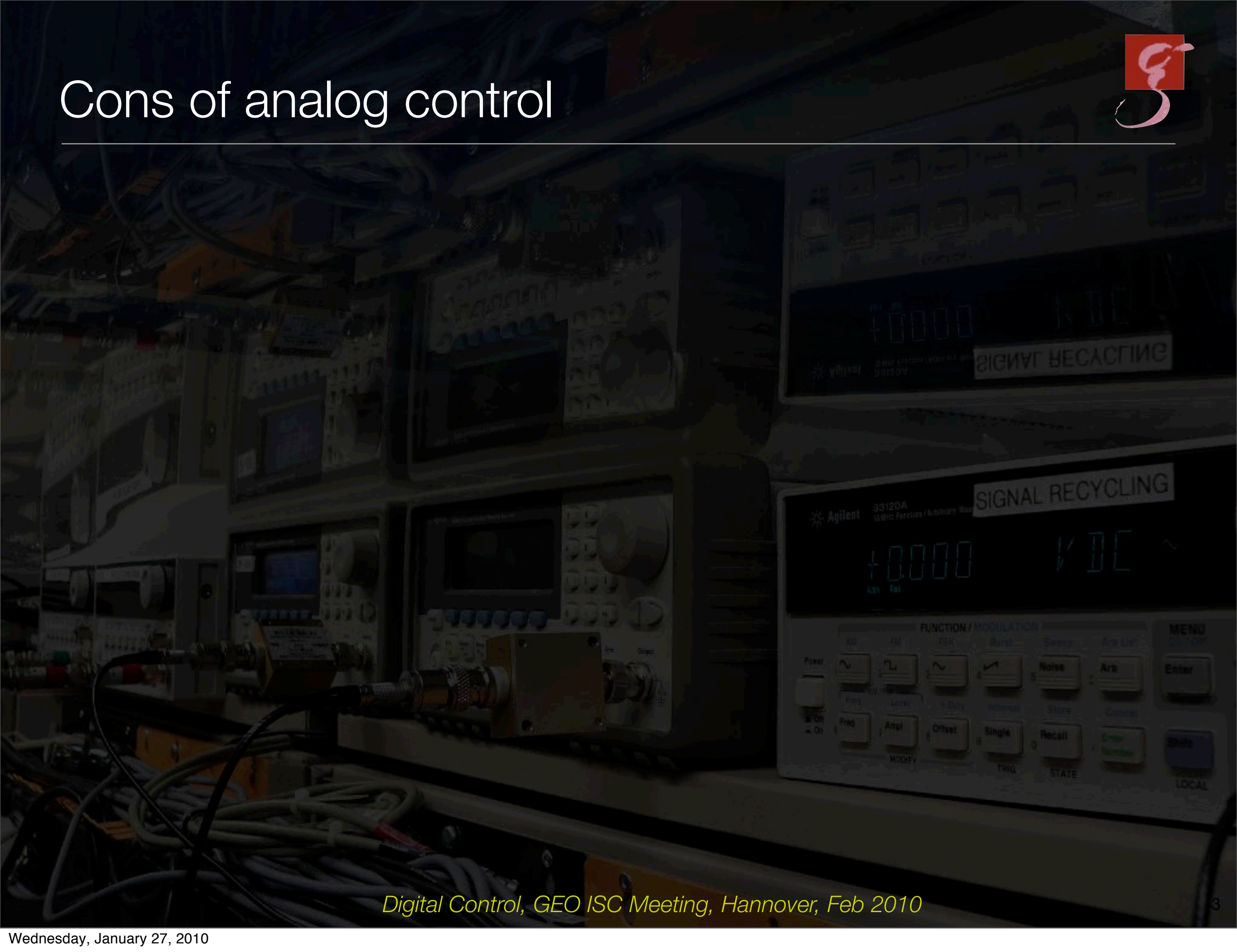
# Contents

---



- Pros and cons of Analog and Digital Control
- Overall areas of work
- What do we need in 10 years from now?
- Other random thoughts

# Cons of analog control



*Digital Control, GEO ISC Meeting, Hannover, Feb 2010*



# Cons of analog control

- Slow development
  - difficult to do accurate design
  - tolerances of electronic components

# Cons of analog control

- Slow development
  - difficult to do accurate design
    - tolerances of electronic components
- Hard to do complicated controls





# Cons of analog control

- Slow development
  - difficult to do accurate design
    - tolerances of electronic components
- Hard to do complicated controls
- Interference



# Cons of analog control

- Slow development
  - difficult to do accurate design
    - tolerances of electronic components
- Hard to do complicated controls
- Interference
- Hard to modify
  - testing alternatives is difficult





# Cons of analog control

- Slow development
  - difficult to do accurate design
    - tolerances of electronic components
- Hard to do complicated controls
- Interference
- Hard to modify
  - testing alternatives is difficult
- Hard to build in comparative logic





# Cons of analog control

- Slow development
  - difficult to do accurate design
  - tolerances of electronic components
- Hard to do complicated controls
- Interference
- Hard to modify
  - testing alternatives is difficult
- Hard to build in comparative logic
- Hard to build in 'intelligence'



# Cons of analog control

- Slow development
  - difficult to do accurate design
    - tolerances of electronic components
- Hard to do complicated controls
- Interference
- Hard to modify
  - testing alternatives is difficult
- Hard to build in comparative logic
- Hard to build in 'intelligence'
- Hard to 'back-up'





# Cons of analog control

- Slow development
  - difficult to do accurate design
    - tolerances of electronic components
- Hard to do complicated controls
- Interference
- Hard to modify
  - testing alternatives is difficult
- Hard to build in comparative logic
- Hard to build in 'intelligence'
- Hard to 'back-up'
- Hard to do MIMO

# Pros of analog control

---



*Digital Control, GEO ISC Meeting, Hannover, Feb 2010*



# Pros of analog control

---

- Robust
  - doesn't (often) break down
  - doesn't crash



# Pros of analog control

---



- Robust
  - doesn't (often) break down
  - doesn't crash
- Dynamic range
  - 'easier' to avoid being limited by 'self' noise



# Pros of analog control

---



- Robust
  - doesn't (often) break down
  - doesn't crash
- Dynamic range
  - 'easier' to avoid being limited by 'self' noise
- Continuous processing
  - no inherent band-width limits

# Pros of analog control

---



- Robust
  - doesn't (often) break down
  - doesn't crash
- Dynamic range
  - 'easier' to avoid being limited by 'self' noise
- Continuous processing
  - no inherent band-width limits
- Hard to modify



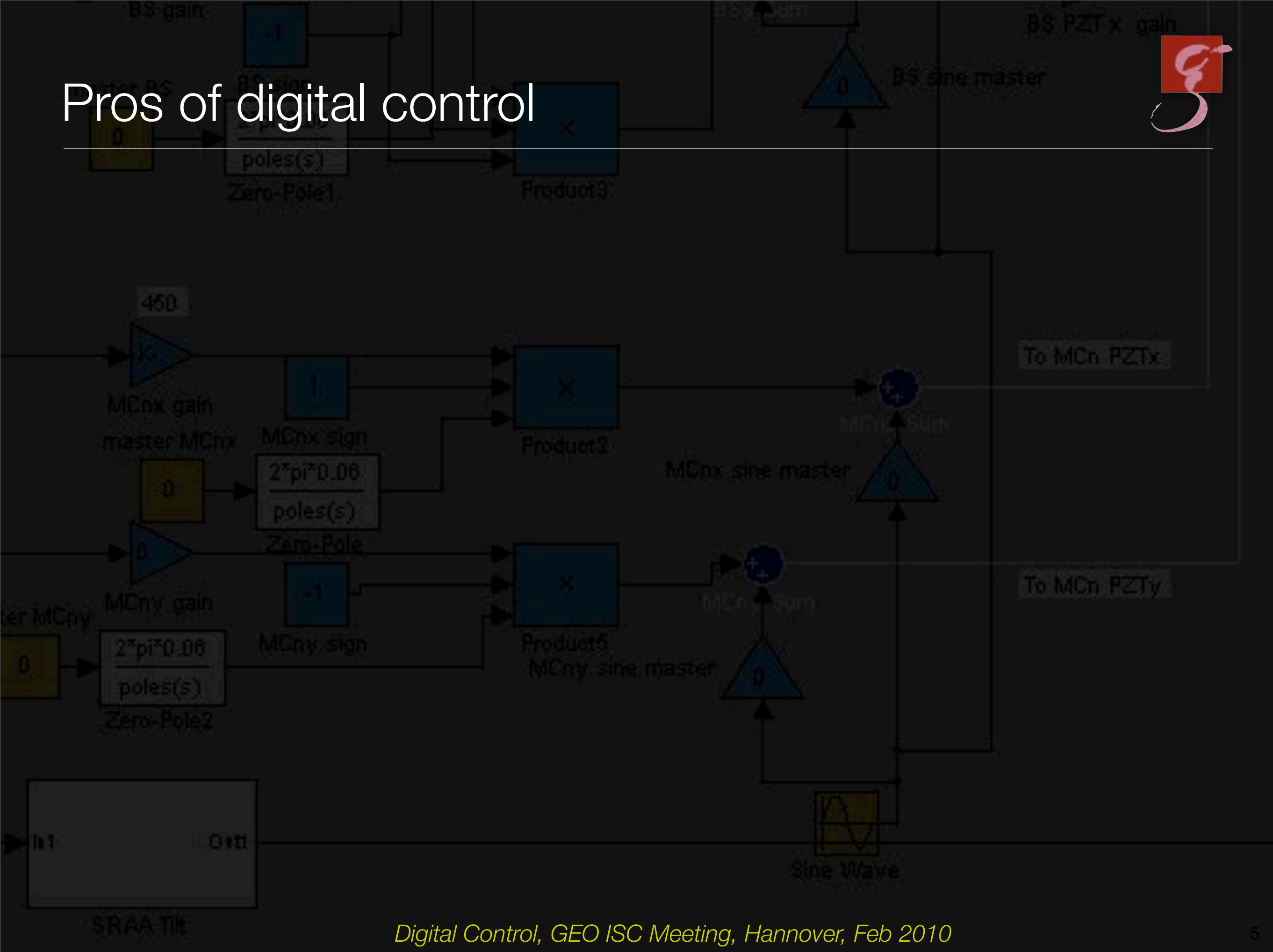
# Pros of analog control

---



- Robust
  - doesn't (often) break down
  - doesn't crash
- Dynamic range
  - 'easier' to avoid being limited by 'self' noise
- Continuous processing
  - no inherent band-width limits
- Hard to modify
- Available diagnostic instrumentation is good

# Pros of digital control

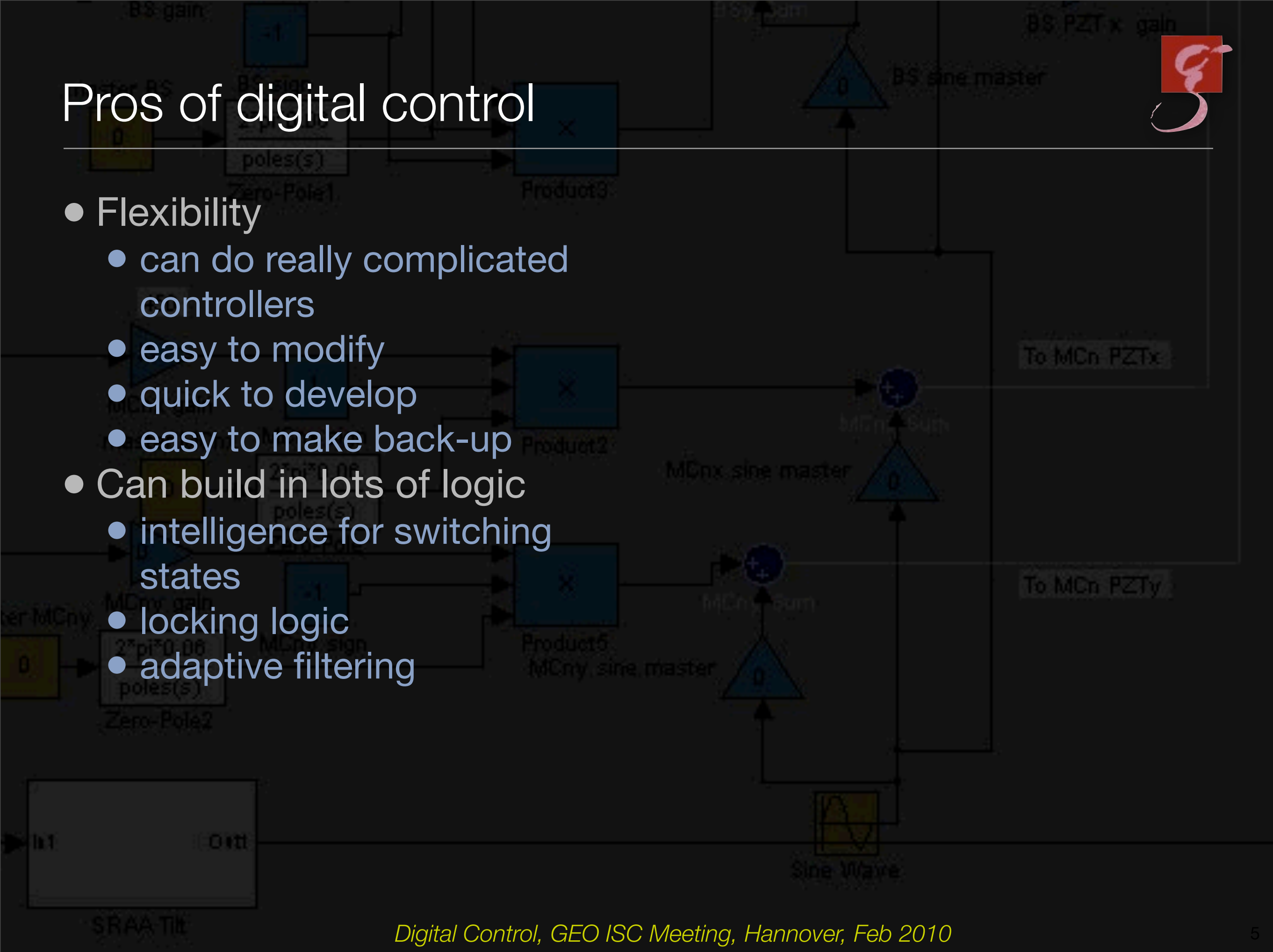




- # Pros of digital control
- Flexibility
    - can do really complicated controllers
    - easy to modify
    - quick to develop
    - easy to make back-up

# Pros of digital control

- Flexibility
  - can do really complicated controllers
  - easy to modify
  - quick to develop
  - easy to make back-up
- Can build in lots of logic
  - intelligence for switching states
  - locking logic
  - adaptive filtering





# Pros of digital control

- Flexibility

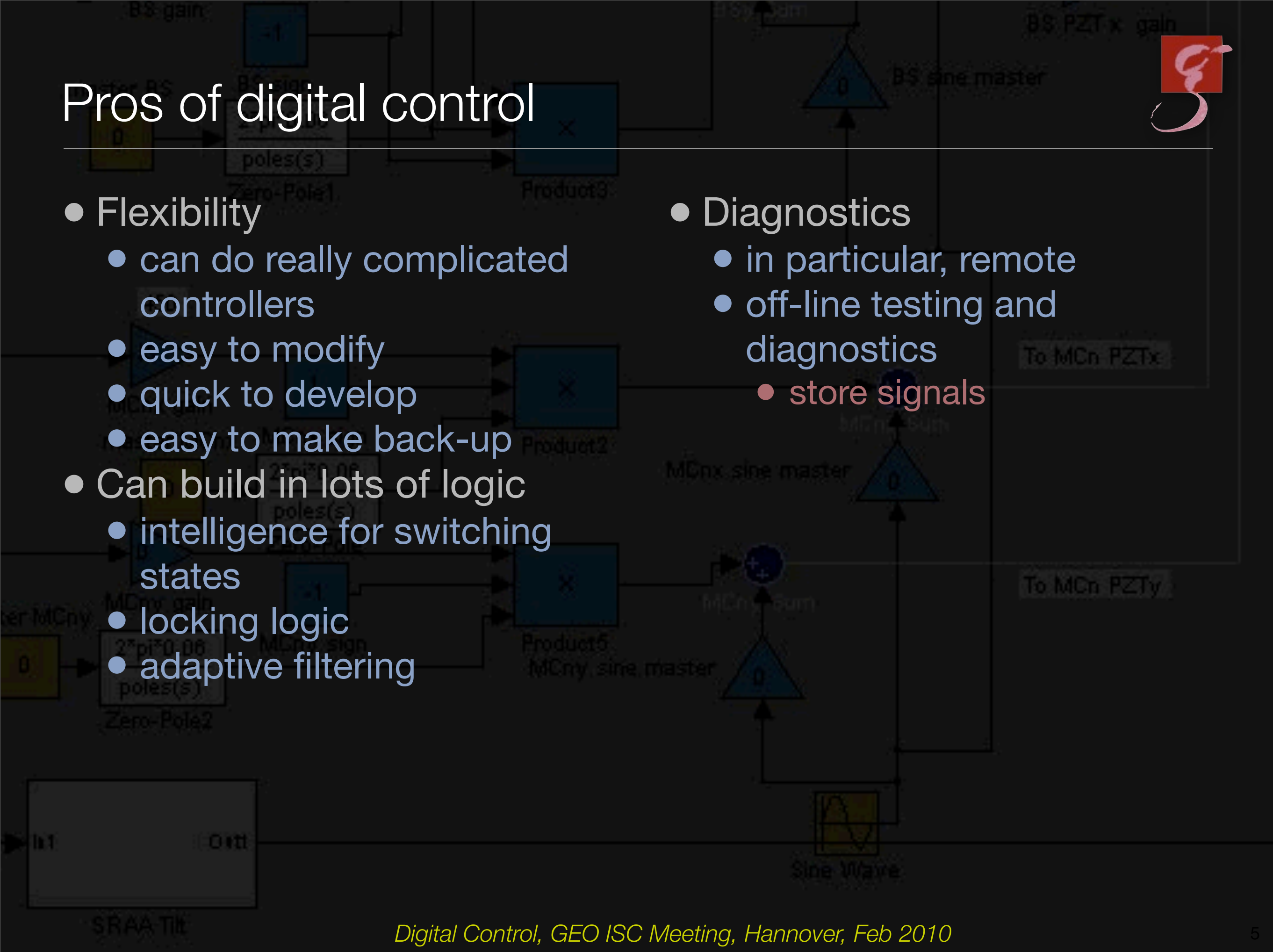
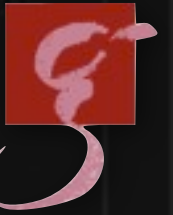
- can do really complicated controllers
- easy to modify
- quick to develop
- easy to make back-up

- Can build in lots of logic

- intelligence for switching states
- locking logic
- adaptive filtering

- Diagnostics

- in particular, remote
- off-line testing and diagnostics
  - store signals



# Pros of digital control

- Flexibility
  - can do really complicated controllers
  - easy to modify
  - quick to develop
  - easy to make back-up
- Can build in lots of logic
  - intelligence for switching states
  - locking logic
  - adaptive filtering
- Diagnostics
  - in particular, remote
  - off-line testing and diagnostics
    - store signals
- Can do lots of DIO



# Pros of digital control

- Flexibility
  - can do really complicated controllers
  - easy to modify
  - quick to develop
  - easy to make back-up
- Can build in lots of logic
  - intelligence for switching states
  - locking logic
  - adaptive filtering
- Diagnostics
  - in particular, remote
  - off-line testing and diagnostics
    - store signals
- Can do lots of DIO
- Can do MIMO

# Pros of digital control

- Flexibility

- can do really complicated controllers
- easy to modify
- quick to develop
- easy to make back-up

- Can build in lots of logic

- intelligence for switching states
- locking logic
- adaptive filtering

- Diagnostics

- in particular, remote
- off-line testing and diagnostics

- store signals

- Can do lots of DIO

- Can do MIMO

- Error detection



# Pros of digital control

- Flexibility

- can do really complicated controllers
- easy to modify
- quick to develop
- easy to make back-up

- Can build in lots of logic

- intelligence for switching states
- locking logic
- adaptive filtering

- Diagnostics

- in particular, remote
- off-line testing and diagnostics

- store signals

- Can do lots of DIO

- Can do MIMO

- Error detection

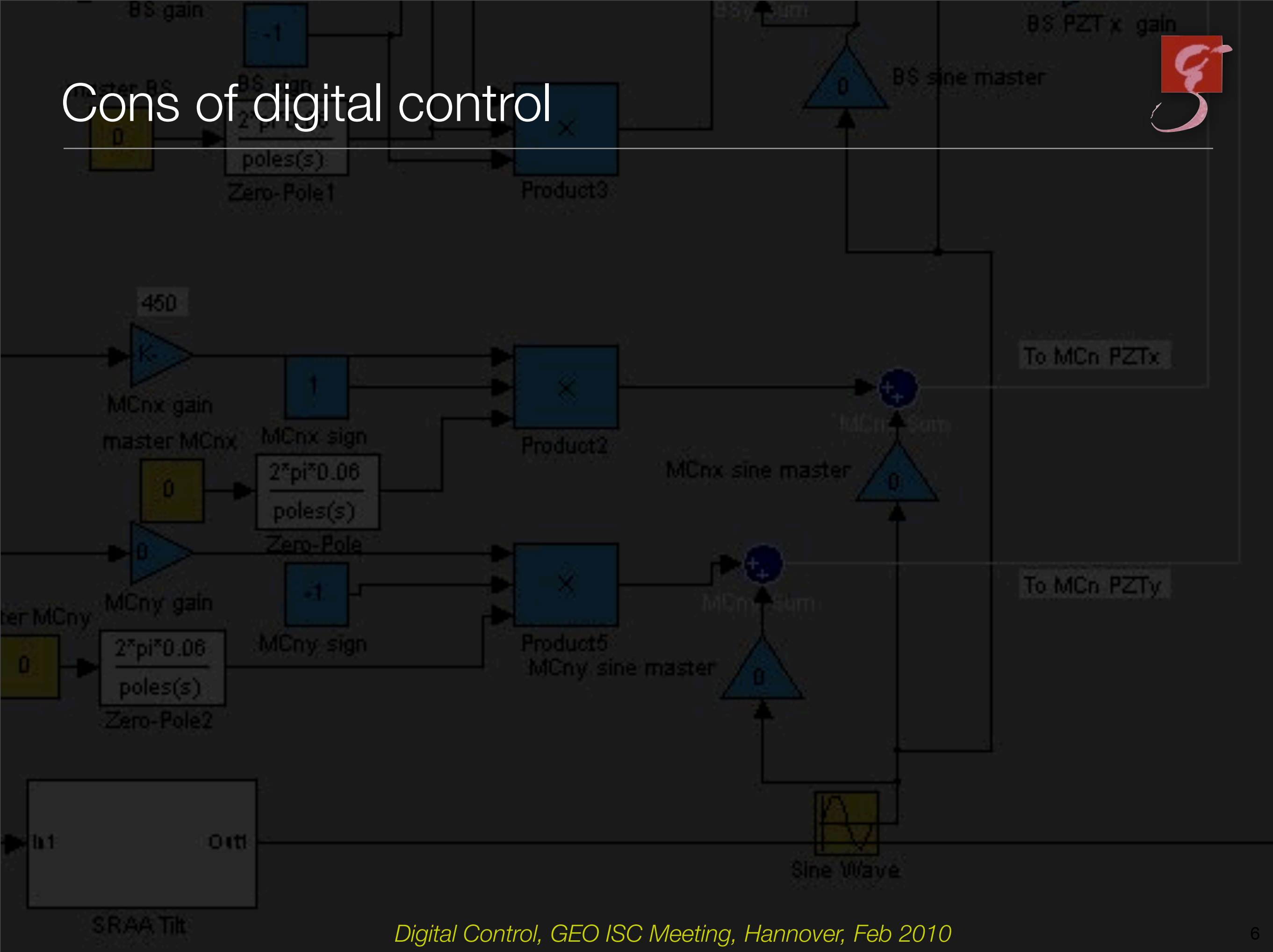
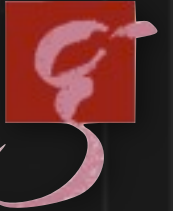
- Signal generation and injection

# Pros of digital control

- Flexibility
  - can do really complicated controllers
  - easy to modify
  - quick to develop
  - easy to make back-up
- Can build in lots of logic
  - intelligence for switching states
  - locking logic
  - adaptive filtering
- Diagnostics
  - in particular, remote
  - off-line testing and diagnostics
    - store signals
- Can do lots of DIO
- Can do MIMO
- Error detection
- Signal generation and injection
- Control interfaces are more precise

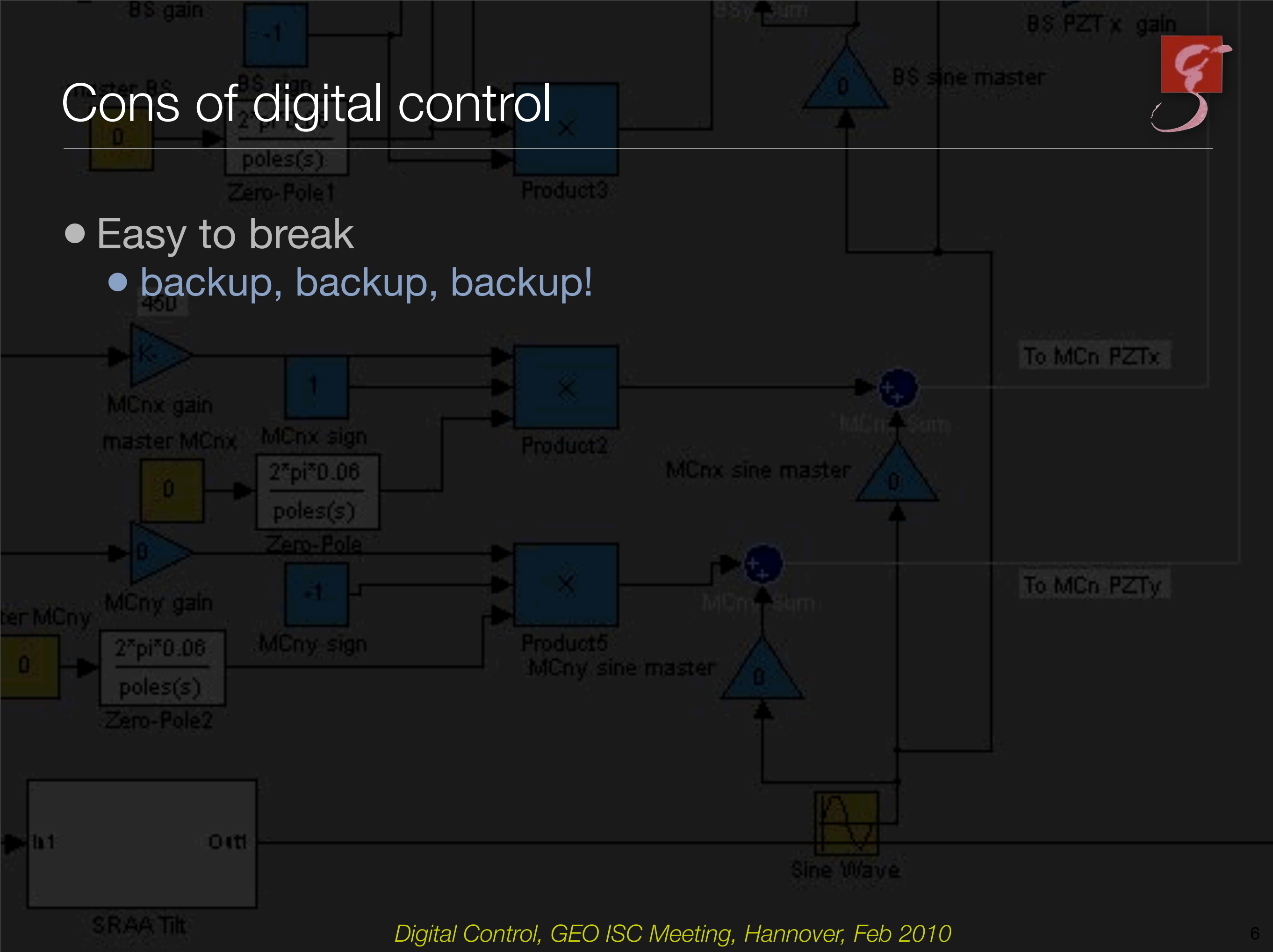


# Cons of digital control



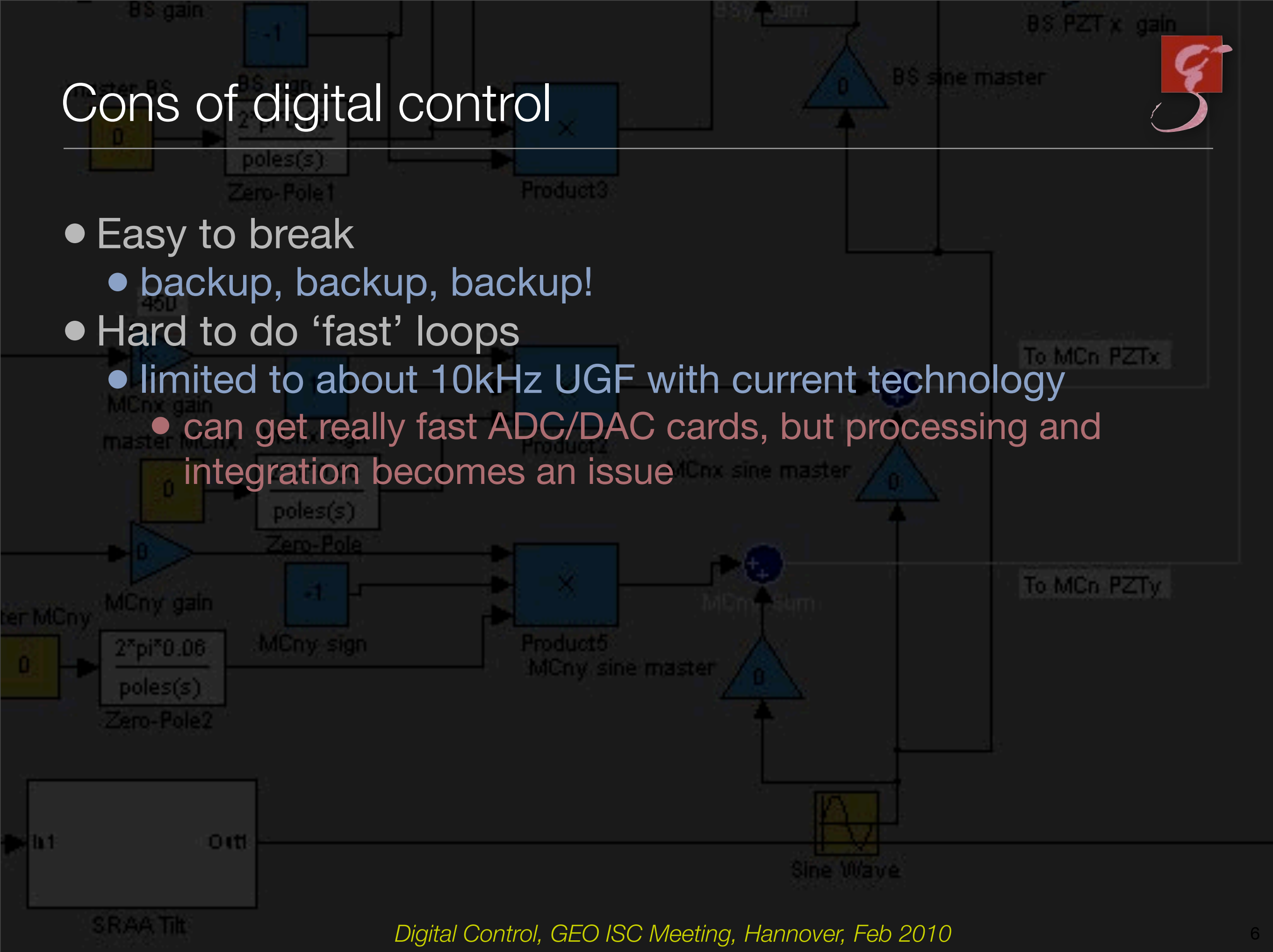
# Cons of digital control

- Easy to break
  - backup, backup, backup!



# Cons of digital control

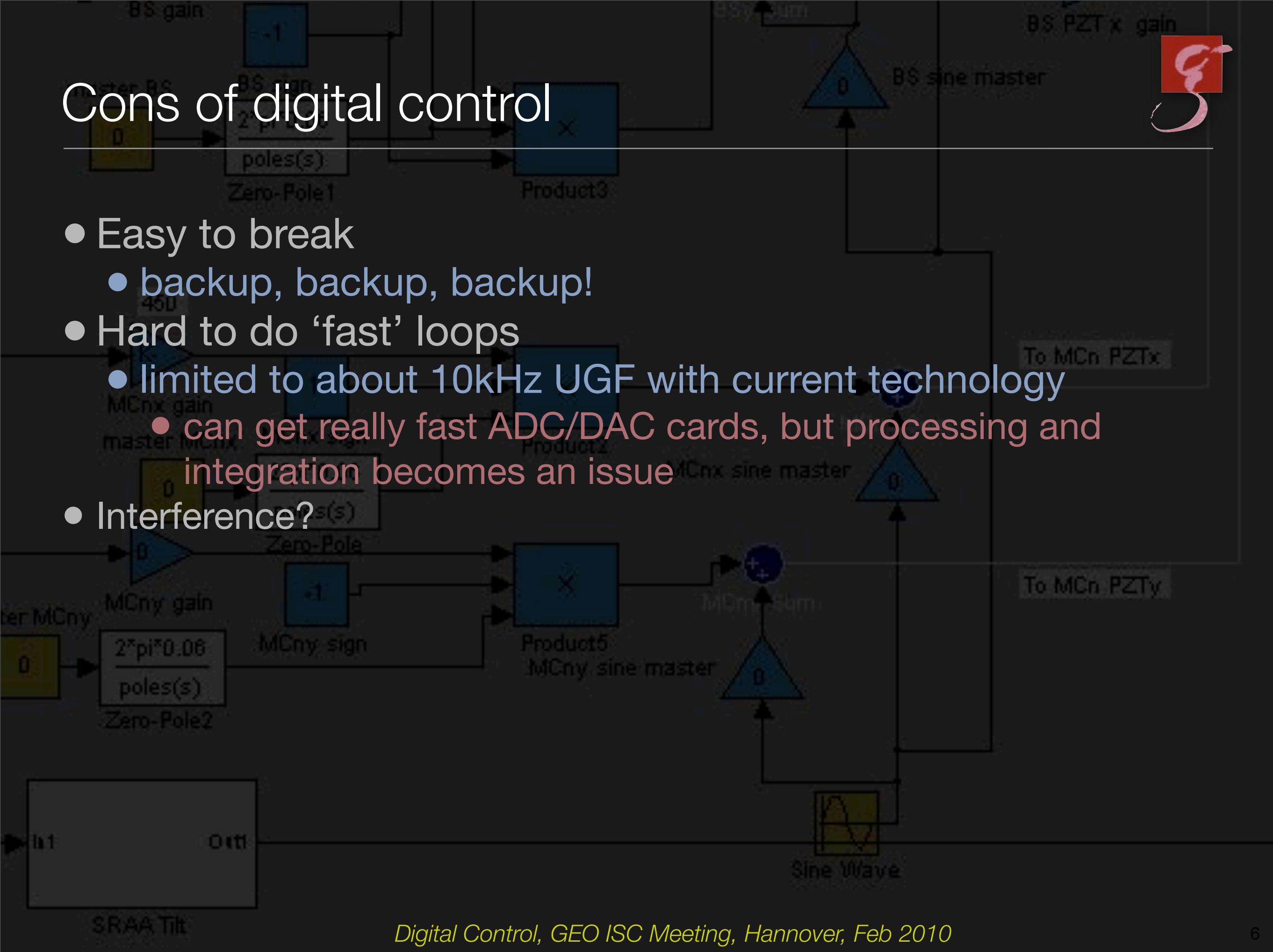
- Easy to break
  - backup, backup, backup!
- Hard to do 'fast' loops
  - limited to about 10kHz UGF with current technology
    - can get really fast ADC/DAC cards, but processing and integration becomes an issue





# Cons of digital control

- Easy to break
  - backup, backup, backup!
- Hard to do 'fast' loops
  - limited to about 10kHz UGF with current technology
    - can get really fast ADC/DAC cards, but processing and integration becomes an issue
- Interference?



# Cons of digital control

- Easy to break
  - backup, backup, backup!
- Hard to do 'fast' loops
  - limited to about 10kHz UGF with current technology
    - can get really fast ADC/DAC cards, but processing and integration becomes an issue
- Interference?
- Dynamic range
  - best systems limited to about 20-bit
  - typical systems more like 10-14-bit
  - often need good whitening, both at ADC and DAC

# Cons of digital control

- Easy to break
  - backup, backup, backup!
- Hard to do 'fast' loops
  - limited to about 10kHz UGF with current technology
    - can get really fast ADC/DAC cards, but processing and integration becomes an issue
- Interference?
- Dynamic range
  - best systems limited to about 20-bit
  - typical systems more like 10-14-bit
  - often need good whitening, both at ADC and DAC
- Software interfaces are currently not as user-friendly as real knobs and switches



# Cons of digital control

- Easy to break
  - backup, backup, backup!
- Hard to do 'fast' loops
  - limited to about 10kHz UGF with current technology
    - can get really fast ADC/DAC cards, but processing and integration becomes an issue
- Interference?
- Dynamic range
  - best systems limited to about 20-bit
  - typical systems more like 10-14-bit
  - often need good whitening, both at ADC and DAC
- Software interfaces are currently not as user-friendly as real knobs and switches
- Software instrumentation not as advanced as analog

# When I'm 64....

---



*Digital Control, GEO ISC Meeting, Hannover, Feb 2010*

# When I'm 64....

---

- Control will be adaptive
  - more advanced use of control theory, control engineers







# When I'm 64....

---

- Control will be adaptive
  - more advanced use of control theory, control engineers
- Observatories will become more 'self-controlling'
  - built-in failure/recovery modes



# When I'm 64....

---

- Control will be adaptive
  - more advanced use of control theory, control engineers
- Observatories will become more 'self-controlling'
  - built-in failure/recovery modes
- Greater use of distributed and parallel computing
  - cpu farm, cluster, GPUs



# When I'm 64....

---

- Control will be adaptive
  - more advanced use of control theory, control engineers
- Observatories will become more 'self-controlling'
  - built-in failure/recovery modes
- Greater use of distributed and parallel computing
  - cpu farm, cluster, GPUs
- We will have powerful human interfaces, visualisation and diagnostic tools
  - real-time instrumentation in hand-held devices
  - clean, scalable, modern-looking control interfaces





# When I'm 64....

---

- Control will be adaptive
  - more advanced use of control theory, control engineers
- Observatories will become more 'self-controlling'
  - built-in failure/recovery modes
- Greater use of distributed and parallel computing
  - cpu farm, cluster, GPUs
- We will have powerful human interfaces, visualisation and diagnostic tools
  - real-time instrumentation in hand-held devices
  - clean, scalable, modern-looking control interfaces
- We will have high-resolution, high sample-rate, distributed analog-digital interfaces
  - high-quality A/D, D/A modules



# When I'm 64....

---

- Control will be adaptive
  - more advanced use of control theory, control engineers
- Observatories will become more 'self-controlling'
  - built-in failure/recovery modes
- Greater use of distributed and parallel computing
  - cpu farm, cluster, GPUs
- We will have powerful human interfaces, visualisation and diagnostic tools
  - real-time instrumentation in hand-held devices
  - clean, scalable, modern-looking control interfaces
- We will have high-resolution, high sample-rate, distributed analog-digital interfaces
  - high-quality A/D, D/A modules
- Communication over real-time wifi
  - driven by entertainment industry - internet TV





# When I'm 64....

---

- Control will be adaptive
  - more advanced use of control theory, control engineers
- Observatories will become more 'self-controlling'
  - built-in failure/recovery modes
- Greater use of distributed and parallel computing
  - cpu farm, cluster, GPUs
- We will have powerful human interfaces, visualisation and diagnostic tools
  - real-time instrumentation in hand-held devices
  - clean, scalable, modern-looking control interfaces
- We will have high-resolution, high sample-rate, distributed analog-digital interfaces
  - high-quality A/D, D/A modules
- Communication over real-time wifi
  - driven by entertainment industry - internet TV
- Tighter coupling between data analysis and instrument control
  - tracking of signals, IFO operation modes responding to external triggers



# Areas of activity

---



Experiment

*Digital Control, GEO ISC Meeting, Hannover, Feb 2010*

# Areas of activity

---



ADC

DAC

DIO

ADC

DAC

DIO

Experiment

*Digital Control, GEO ISC Meeting, Hannover, Feb 2010*

# Areas of activity

---



Timing

ADC

DAC

DIO

ADC

DAC

DIO

Experiment

*Digital Control, GEO ISC Meeting, Hannover, Feb 2010*



# Areas of activity

---



Communication

Timing

ADC

DAC

DIO

ADC

DAC

DIO

Experiment

*Digital Control, GEO ISC Meeting, Hannover, Feb 2010*

# Areas of activity

---



Real-time Processing

Async Processing

Communication

Timing

ADC

DAC

DIO

ADC

DAC

DIO

Experiment

# Areas of activity

---



Control

Diagnostics

Control

Real-time Processing

Async Processing

Communication

Timing

ADC

DAC

DIO

ADC

DAC

DIO

Experiment



# Areas of activity

---



Scripting interface

Control

Diagnostics

Control

Real-time Processing

Async Processing

Communication

Timing

ADC

DAC

DIO

ADC

DAC

DIO

Experiment

# Areas of activity



GUI

GUI

Scripting interface

Control

Diagnostics

Control

Real-time Processing

Async Processing

Communication

Timing

ADC

DAC

DIO

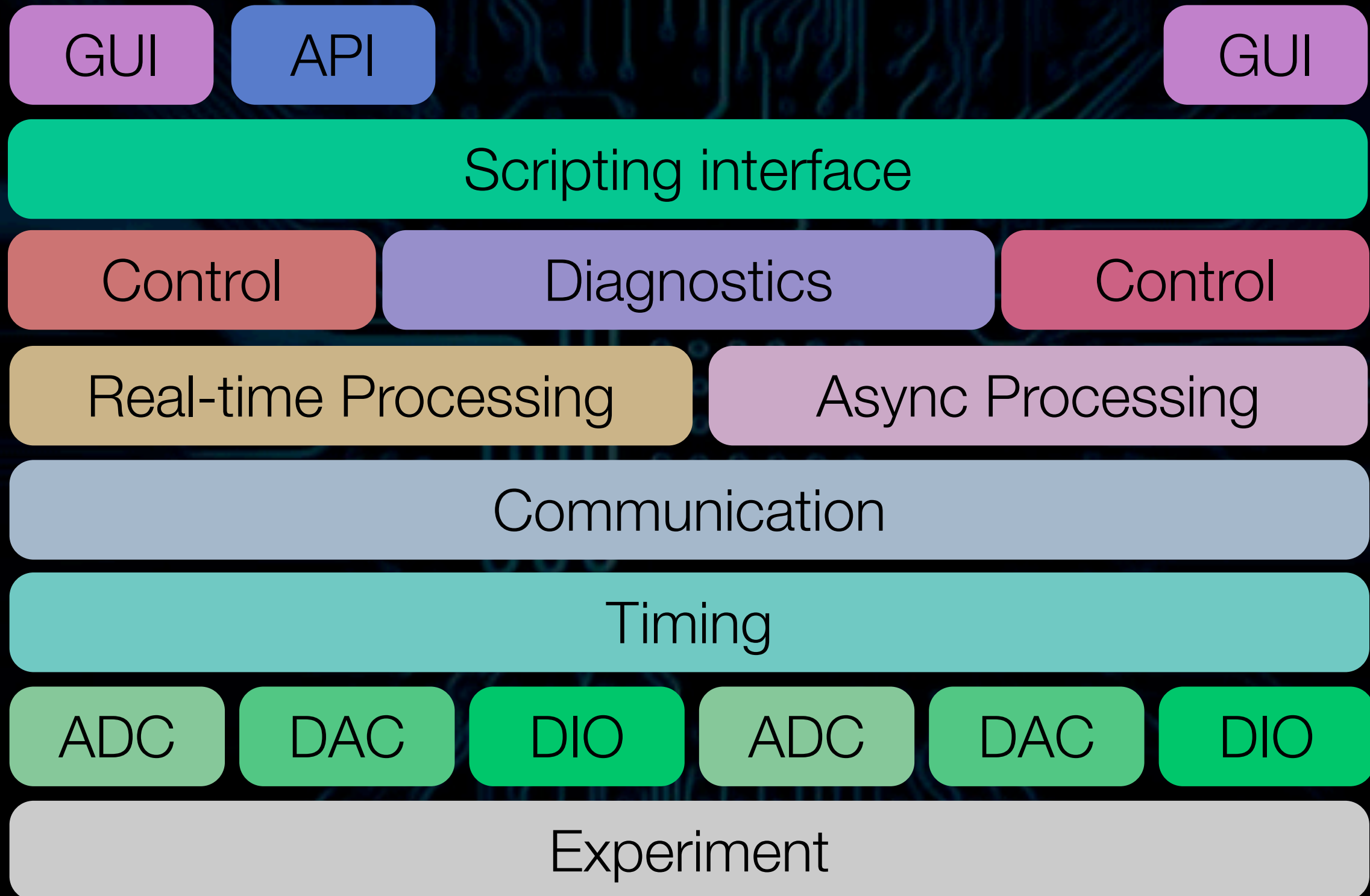
ADC

DAC

DIO

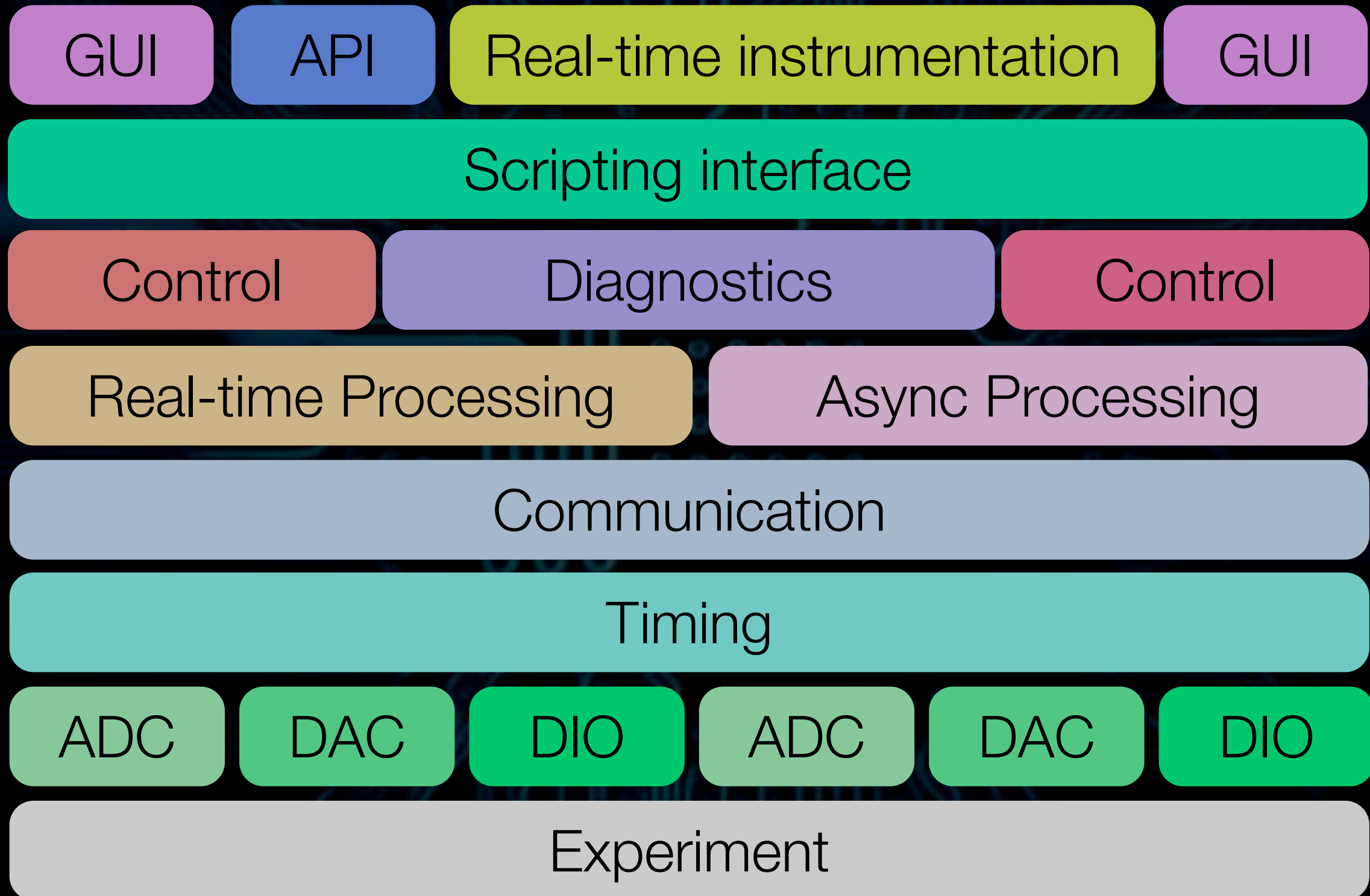
Experiment

# Areas of activity





# Areas of activity



# Future Requirements



*Digital Control, GEO ISC Meeting, Hannover, Feb 2010*



# Future Requirements

- How fast do we want/need to make loops?
  - split loops, down/up mixing
  - MSPS chips available
    - can we process that?
    - GPUs?



# Future Requirements



- How fast do we want/need to make loops?
  - split loops, down/up mixing
  - MSPS chips available
    - can we process that?
    - GPUs?
- How much resolution do we need?
  - typically get 16-bit or 24-bit (sigma-delta)



# Future Requirements



- How fast do we want/need to make loops?
  - split loops, down/up mixing
  - MSPS chips available
    - can we process that?
    - GPUs?
- How much resolution do we need?
  - typically get 16-bit or 24-bit (sigma-delta)
- How much processing power?
  - loop/control complexity
  - sample-rate
  - sample resolution
  - number of channels
  - inter-process communication



# Future Requirements



- How fast do we want/need to make loops?
  - split loops, down/up mixing
  - MSPS chips available
    - can we process that?
    - GPUs?
- How much resolution do we need?
  - typically get 16-bit or 24-bit (sigma-delta)
- How much processing power?
  - loop/control complexity
  - sample-rate
  - sample resolution
  - number of channels
  - inter-process communication
- Good software!
  - it should be nice to use, powerful, flexible, robust



# Other thoughts

---



# Other thoughts

---



- Should look at audio systems

# Other thoughts

---



- Should look at audio systems
- Research in to adaptive systems for IFO control



# Other thoughts

---



- Should look at audio systems
- Research in to adaptive systems for IFO control
- MIMO systems

# Other thoughts

---



- Should look at audio systems
- Research in to adaptive systems for IFO control
- MIMO systems
- Reduce hardware to sensors and actuators

# Other thoughts

---



- Should look at audio systems
- Research in to adaptive systems for IFO control
- MIMO systems
- Reduce hardware to sensors and actuators
- Embedded dedicated controls





# Other thoughts

---

- Should look at audio systems
- Research in to adaptive systems for IFO control
- MIMO systems
- Reduce hardware to sensors and actuators
- Embedded dedicated controls
- Feedforward techniques, Kalman filtering



# Other thoughts

---

- Should look at audio systems
- Research in to adaptive systems for IFO control
- MIMO systems
- Reduce hardware to sensors and actuators
- Embedded dedicated controls
- Feedforward techniques, Kalman filtering
- Instrumentation and visualisation



# Other thoughts

---

- Should look at audio systems
- Research in to adaptive systems for IFO control
- MIMO systems
- Reduce hardware to sensors and actuators
- Embedded dedicated controls
- Feedforward techniques, Kalman filtering
- Instrumentation and visualisation
- Digital control means more data
  - storage, data access